

MONTGOMERY INVESTMENT MANAGEMENT, INC.

Performance Reports

MIM Equity Composite Returns

Gross and Net of Fees

Rock Spring Plaza

Phone: 301-897-9783

6550 Rock Spring Drive, Suite 600A

Fax: 301-897-9794

Bethesda, MD 20817

www.miminvest.com

Montgomery Investment Management, Inc.

MIM Equity Composite Performance vs Benchmarks

Return Period	MIM Equity Comp Gross of Fees	MIM Equity Comp Net of Fees	S&P 500	Russell 3000 Value
YTD 12-31-09 to 06-30-10	(10.05)	(10.32)	(6.65)	(4.83)
1 Year 12-31-08 to 12-31-09	29.21	28.40	26.46	19.76
3 Year 12-31-06 to 12-31-09	0.45	(0.19)	(5.62)	(8.90)
5 Year 12-31-04 to 12-31-09	5.18	4.54	0.42	(0.24)
10 Year 12-31-99 to 12-31-09	11.64	10.96	(0.95)	2.88

Montgomery Investment Management Inc. (MIM, the firm), formed in 1987, is a SEC registered investment advisor which manages primarily US equities for both individual and institutional clients. MIM utilizes fundamental analysis in order to find securities with the best potential. MIM's Equity Composite strategy focuses on total return. Accounts comprising the Equity Composite are limited to those clients that adhere to MIM's investment philosophy without excessive positions with tax encumbrances. The Equity Composite and Index returns reflect the reinvestment of dividends and other earnings. MIM does not make use of leverage or derivatives. The Equity Composite assets as of December 31, 2009 were \$129 million which represented 46% of the firm's total assets. The Equity Composite contains one non-fee paying account representing 35% of the composite assets as of December 31, 2009. However, for performance purposes, hypothetical management fees have been incorporated into the net of fees return for this account based on the current fee schedule. Returns are calculated in U.S. dollars. MIM has received a Firm-wide GIPS® Verification for the period January 1, 1993 through December 31, 2009.

MIM claims compliance with the Global Investment Performance Standards (GIPS®). A complete list and description of all firm composites is available upon request. To receive a complete presentation that adheres to the GIPS® standards contact Elaine Schuler at 301-897-9783.

Montgomery Investment Management, Inc.

MIM Equity Composite Performance vs Benchmarks

Return Period	MIM Equity Comp Gross of Fees	MIM Equity Comp Net of Fees	S&P 500	Russell 3000 Value
YTD	(10.05)	(10.32)	(6.65)	(4.83)
12-31-09	29.21	28.40	26.46	19.76
12-31-08	(31.75)	(32.20)	(37.00)	(36.25)
12-31-07	14.92	14.21	5.49	(1.01)
12-31-06	11.13	10.48	15.79	22.34
12-31-05	14.29	13.65	4.91	6.85
12-31-04	16.51	15.82	10.88	16.94
12-31-03	29.22	28.41	28.68	31.14
12-31-02	1.28	0.67	(22.10)	(15.18)
12-31-01	23.06	22.34	(11.89)	(4.33)
12-31-00	24.61	23.85	(9.10)	8.04

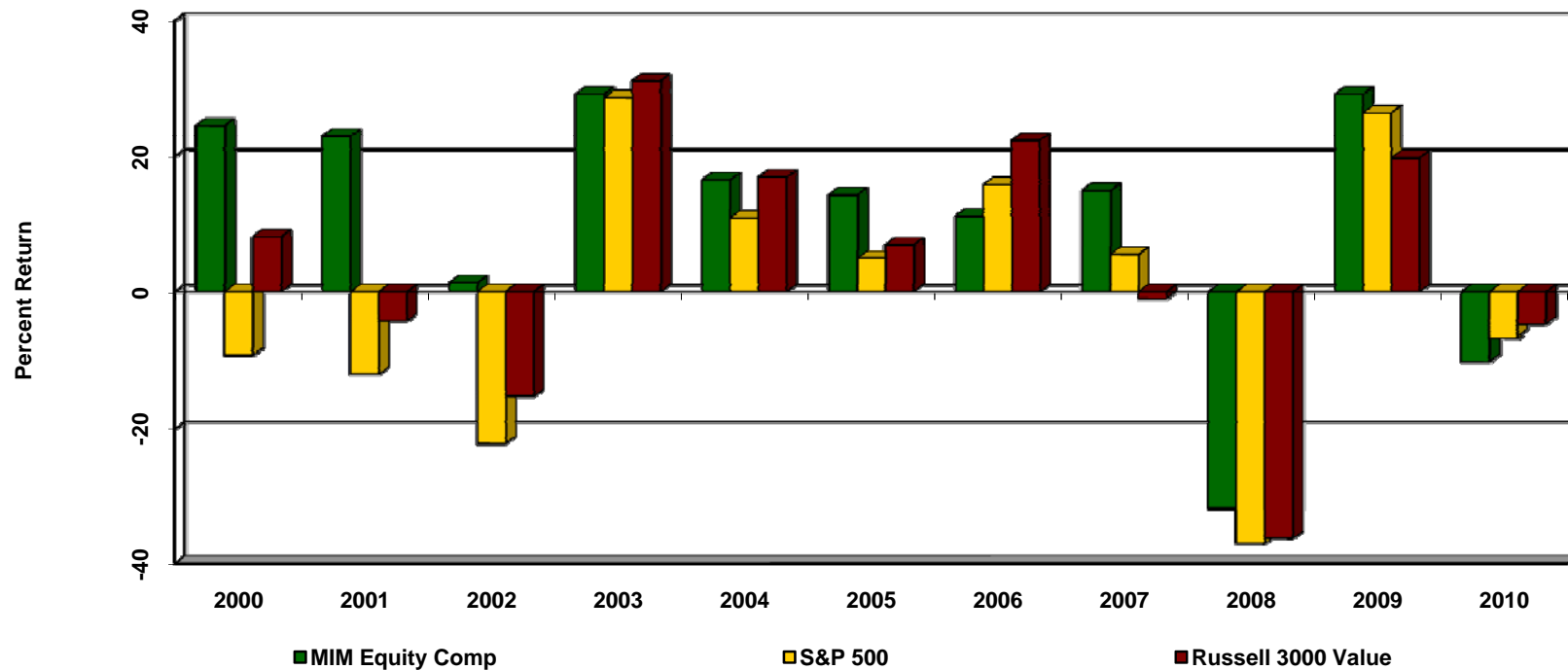
Montgomery Investment Management Inc. (MIM, the firm), formed in 1987, is a SEC registered investment advisor which manages primarily US equities for both individual and institutional clients. MIM utilizes fundamental analysis in order to find securities with the best potential. MIM's Equity Composite strategy focuses on total return. Accounts comprising the Equity Composite are limited to those clients that adhere to MIM's investment philosophy without excessive positions with tax encumbrances. The Equity Composite and Index returns reflect the reinvestment of dividends and other earnings. MIM does not make use of leverage or derivatives. The Equity Composite assets as of December 31, 2009 were \$129 million which represented 46% of the firm's total assets. The Equity Composite contains one non-fee paying account representing 35% of the composite assets as of December 31, 2009. However, for performance purposes, hypothetical management fees have been incorporated into the net of fees return for this account based on the current fee schedule.

Returns are calculated in U.S. dollars. MIM has received a Firm-wide GIPS® Verification for the period January 1, 1993 through December 31, 2009.

MIM claims compliance with the Global Investment Performance Standards (GIPS®). A complete list and description of all firm composites is available upon request. To receive a complete presentation that adheres to the GIPS® standards contact Elaine Schuler at 301-897-9783.

Montgomery Investment Management, Inc.

MIM Equity Composite Performance vs Benchmarks (Gross of Fees)

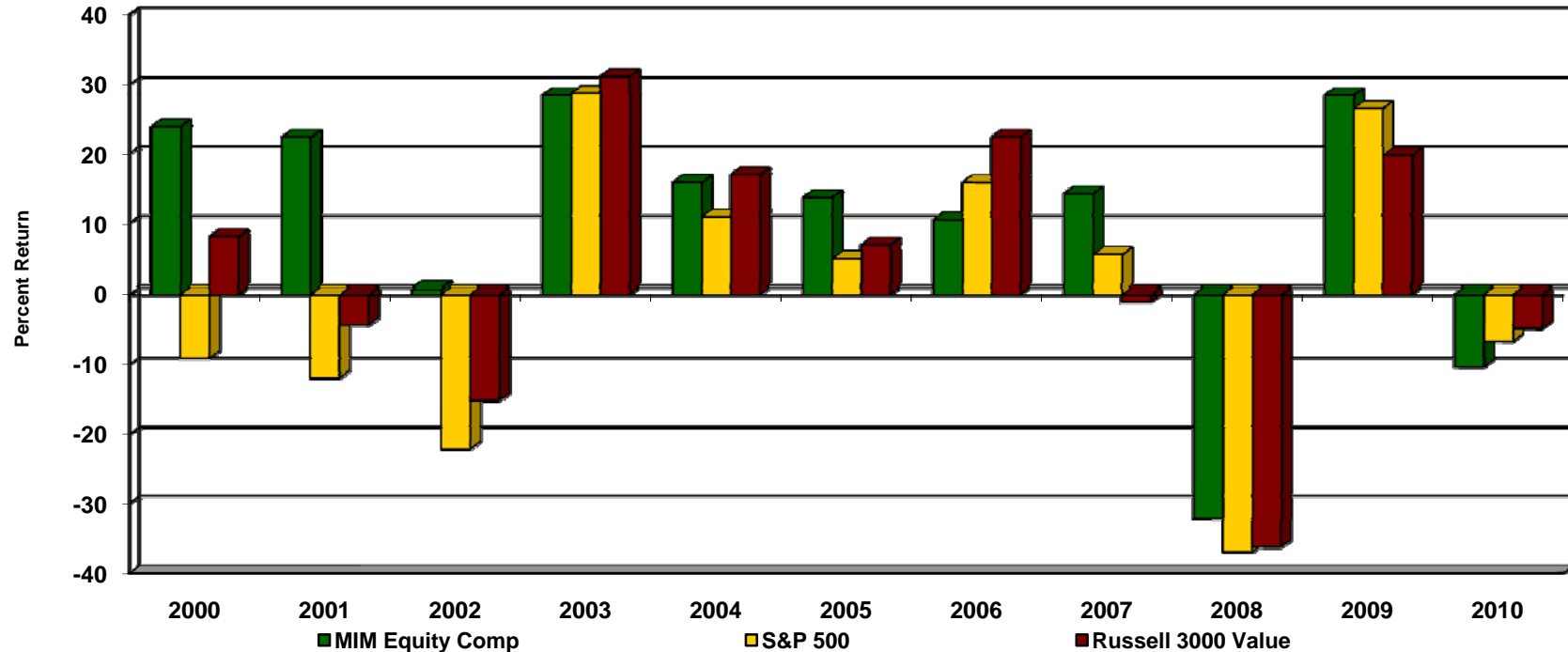


Montgomery Investment Management Inc. (MIM, the firm), formed in 1987, is a SEC registered investment advisor which manages primarily US equities for both individual and institutional clients. MIM utilizes fundamental analysis in order to find securities with the best potential. MIM's Equity Composite strategy focuses on total return. Accounts comprising the Equity Composite are limited to those clients that adhere to MIM's investment philosophy without excessive positions with tax encumbrances. The Equity Composite and Index returns reflect the reinvestment of dividends and other earnings. MIM does not make use of leverage or derivatives. The Equity Composite assets as of December 31, 2009 were \$129 million which represented 46% of the firm's total assets. The Equity Composite contains one non-fee paying account representing 35% of the composite assets as of December 31, 2009. However, for performance purposes, hypothetical management fees have been incorporated into the net of fees return for this account based on the current fee schedule.

Returns are calculated in U.S. dollars. MIM has received a Firm-wide GIPS® Verification for the period January 1, 1993 through December 31, 2009. MIM claims compliance with the Global Investment Performance Standards (GIPS®). A complete list and description of all firm composites is available upon request. To receive a complete presentation that adheres to the GIPS® standards contact Elaine Schuler at 301-897-9783.

Montgomery Investment Management, Inc.

MIM Equity Composite Performance vs Benchmarks (Net of Fees)



Montgomery Investment Management Inc. (MIM, the firm), formed in 1987, is a SEC registered investment advisor which manages primarily US equities for both individual and institutional clients. MIM utilizes fundamental analysis in order to find securities with the best potential. MIM's Equity Composite strategy focuses on total return. Accounts comprising the Equity Composite are limited to those clients that adhere to MIM's investment philosophy without excessive positions with tax encumbrances. The Equity Composite and Index returns reflect the reinvestment of dividends and other earnings. MIM does not make use of leverage or derivatives. The Equity Composite assets as of December 31, 2009 were \$129 million which represented 46% of the firm's total assets. The Equity Composite contains one non-fee paying account representing 35% of the composite assets as of December 31, 2009. However, for performance purposes, hypothetical management fees have been incorporated into the net of fees return for this account based on the current fee schedule. Returns are calculated in U.S. dollars. MIM has received a Firm-wide GIPS® Verification for the period January 1, 1993 through December 31, 2009. MIM claims compliance with the Global Investment Performance Standards (GIPS®). A complete list and description of all firm composites is available upon request. To receive a complete presentation that adheres to the GIPS® standards contact Elaine Schuler at 301-897-9783.

Montgomery Investment Management, Inc.

MIM Equity Composite Performance vs Benchmarks

Cumulative Time Weighted Return, Basis = 100

Return Period	MIM Equity Comp Gross of Fees	MIM Equity Comp Net of Fees	S&P 500	Russell 3000 Value
YTD	270.70	253.98	84.85	126.41
12-31-09	300.95	283.22	90.90	132.82
12-31-08	232.91	220.58	71.88	110.90
12-31-07	341.25	325.33	114.09	173.97
12-31-06	296.95	284.85	108.15	175.74
12-31-05	267.22	257.82	93.40	143.65
12-31-04	233.81	226.86	89.02	134.44
12-31-03	200.69	195.87	80.29	114.96
12-31-02	155.31	152.54	62.39	87.67
12-31-01	153.35	151.52	80.09	103.36
12-31-00	124.61	123.85	90.90	108.04
12-31-99	100.00	100.00	100.00	100.00

Montgomery Investment Management Inc. (MIM, the firm), formed in 1987, is a SEC registered investment advisor which manages primarily US equities for both individual and institutional clients. MIM utilizes fundamental analysis in order to find securities with the best potential. MIM's Equity Composite strategy focuses on total return. Accounts comprising the Equity Composite are limited to those clients that adhere to MIM's investment philosophy without excessive positions with tax encumbrances. The Equity Composite and Index returns reflect the reinvestment of dividends and other earnings. MIM does not make use of leverage or derivatives. The Equity Composite assets as of December 31, 2009 were \$129 million which represented 46% of the firm's total assets. The Equity Composite contains one non-fee paying account representing 35% of the composite assets as of December 31, 2009. However, for performance purposes, hypothetical management fees have been incorporated into the net of fees return for this account based on the current fee schedule.

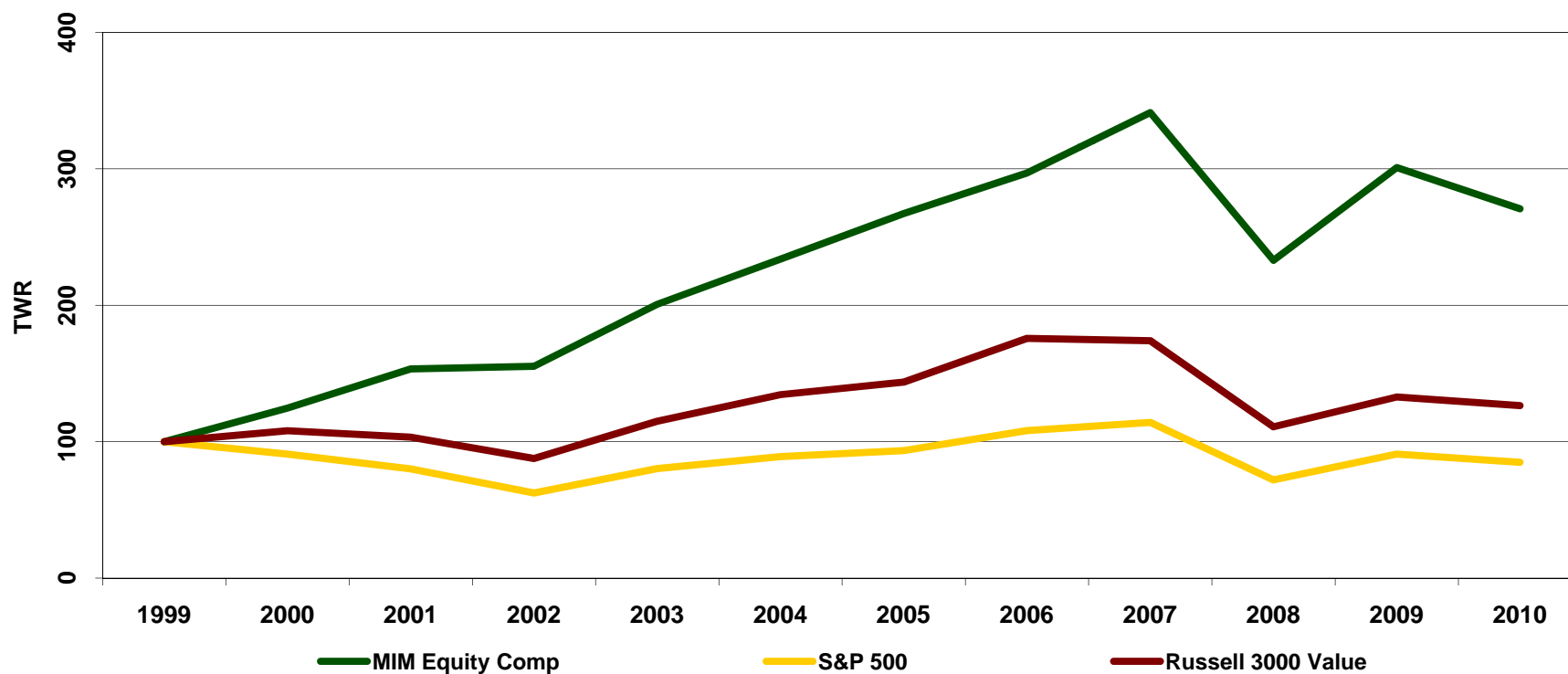
Returns are calculated in U.S. dollars. MIM has received a Firm-wide GIPS® Verification for the period January 1, 1993 through December 31, 2009.

MIM claims compliance with the Global Investment Performance Standards (GIPS®). A complete list and description of all firm composites is available upon request. To receive a complete presentation that adheres to the GIPS® standards contact Elaine Schuler at 301-897-9783.

Montgomery Investment Management, Inc.

MIM Equity Composite Performance vs Benchmarks (Gross of Fees)

Cumulative Time Weighted Return, Basis = 100



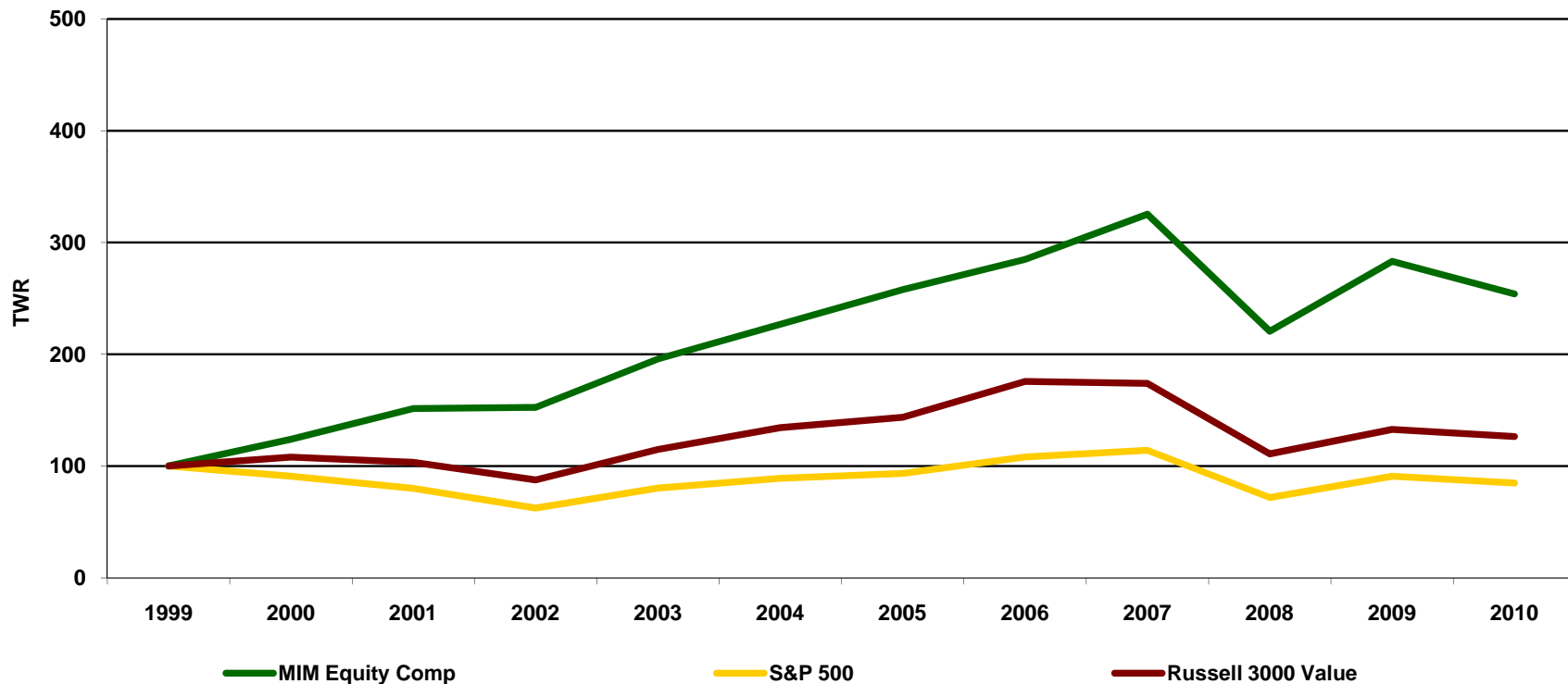
Montgomery Investment Management Inc. (MIM, the firm), formed in 1987, is a SEC registered investment advisor which manages primarily US equities for both individual and institutional clients. MIM utilizes fundamental analysis in order to find securities with the best potential. MIM's Equity Composite strategy focuses on total return. Accounts comprising the Equity Composite are limited to those clients that adhere to MIM's investment philosophy without excessive positions with tax encumbrances. The Equity Composite and Index returns reflect the reinvestment of dividends and other earnings. MIM does not make use of leverage or derivatives. The Equity Composite assets as of December 31, 2009 were \$129 million which represented 46% of the firm's total assets. The Equity Composite contains one non-fee paying account representing 35% of the composite assets as of December 31, 2009. However, for performance purposes, hypothetical management fees have been incorporated into the net of fees return for this account based on the current fee schedule.

Returns are calculated in U.S. dollars. MIM has received a Firm-wide GIPS® Verification for the period January 1, 1993 through December 31, 2009. MIM claims compliance with the Global Investment Performance Standards (GIPS®). A complete list and description of all firm composites is available upon request. To receive a complete presentation that adheres to the GIPS® standards contact Elaine Schuler at 301-897-9783.

Montgomery Investment Management, Inc.

MIM Equity Composite Performance vs Benchmarks (Net of Fees)

Cumulative Time Weighted Return, Basis = 100



Montgomery Investment Management Inc. (MIM, the firm), formed in 1987, is a SEC registered investment advisor which manages primarily US equities for both individual and institutional clients. MIM utilizes fundamental analysis in order to find securities with the best potential. MIM's Equity Composite strategy focuses on total return. Accounts comprising the Equity Composite are limited to those clients that adhere to MIM's investment philosophy without excessive positions with tax encumbrances. The Equity Composite and Index returns reflect the reinvestment of dividends and other earnings. MIM does not make use of leverage or derivatives. The Equity Composite assets as of December 31, 2009 were \$129 million which represented 46% of the firm's total assets. The Equity Composite contains one non-fee paying account representing 35% of the composite assets as of December 31, 2009. However, for performance purposes, hypothetical management fees have been incorporated into the net of fees return for this account based on the current fee schedule.

Returns are calculated in U.S. dollars. MIM has received a Firm-wide GIPS® Verification for the period January 1, 1993 through December 31, 2009. MIM claims compliance with the Global Investment Performance Standards (GIPS®). A complete list and description of all firm composites is available upon request. To receive a complete presentation that adheres to the GIPS® standards contact Elaine Schuler at 301-897-9783.